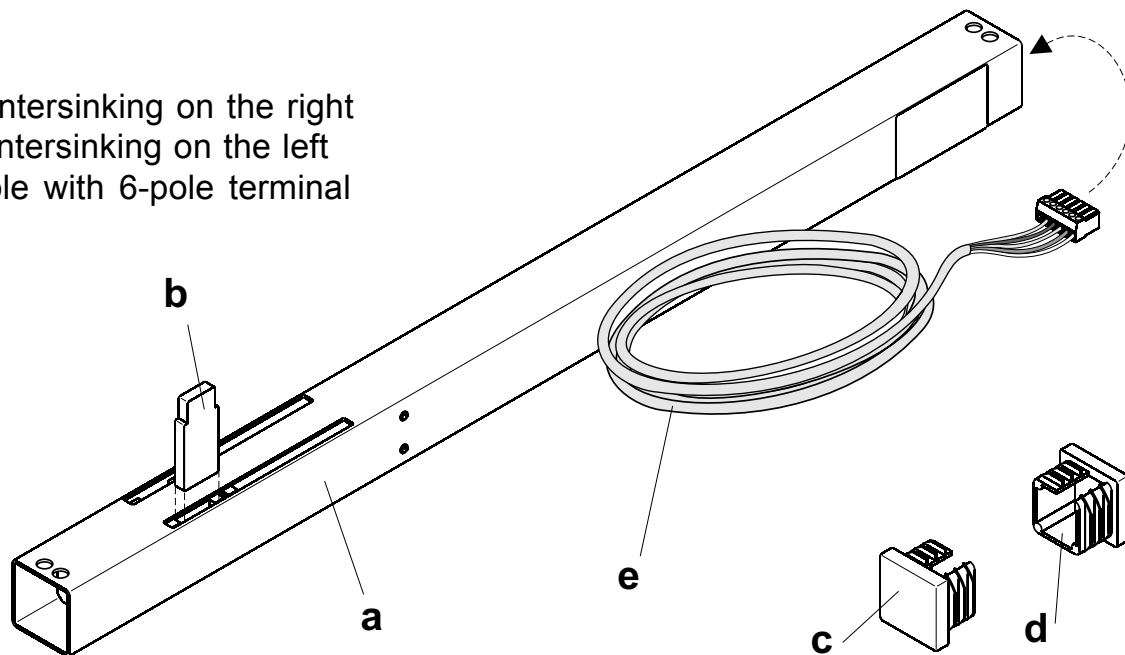




Louvre Drive LFA 70

Ventilation drive for Louvre Windows

- a drive
- b tappet
- c tube cover countersinking on the right
- d tube cover countersinking on the left
- e connecting cable with 6-pole terminal



Application

Louvre windows can be electromotor driven operated with louvre drive LFA 70. It can be used for **daily ventilation** in conjunction with D+H control panels.

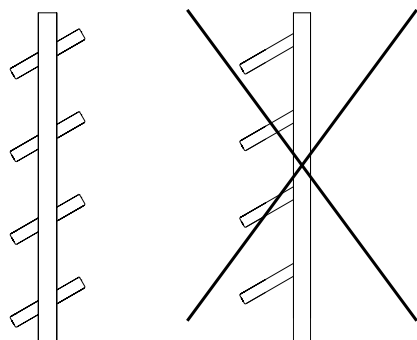
Mounting

Mounting of the drive can be carried out on the right, on the left or on both sides according to structural requirements.

LFA 70 is to be mounted thus, that the limit stop is effected in CLOSED-direction via louvre.

Set boring of $\varnothing 6,8\text{mm}$ for connecting cable in corresponding tube cover!

Louvre drive LFA 70 can be only used with centered louvre bearing.



Function

The drive is μ -controller controlled and has a PC configurable position- and limit stop as well as an overload cutoff. Locking pressure in CLOSED-direction can be reduced to a minimum up to overlapping of louvres for reducing the danger of squeezing in arm's reach. If an overload cutoff has been effected in this area in CLOSED-direction, the drive will open again and close renewed after 5 seconds.

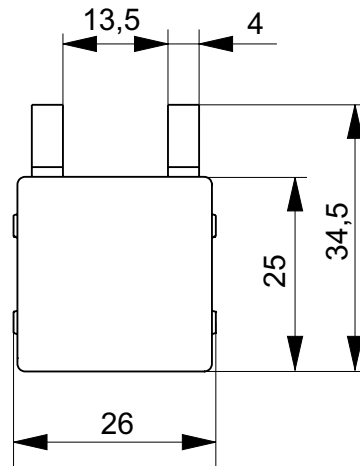
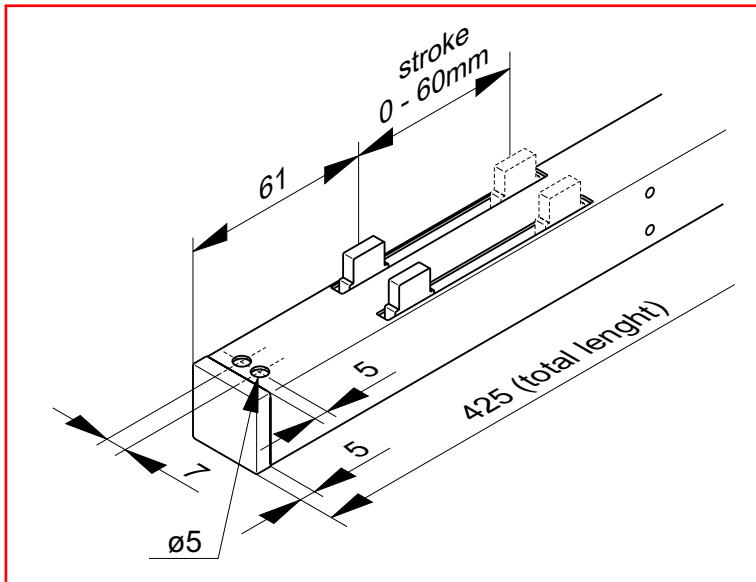
In case of increased power requirement, two drives can be mounted on one louvre window. These drives will communicate with each other. They behave like one drive; a failure in one of the two drives will be recognized and broken glass will be consequently avoided. Maximum aperture angle of the louvre is parameterizable in conjunction with a PC at works or via a BUS-interface by customer.

Technical Data

Power supply : 24V +/-20%
Power consumption : 0,85A
Performance : 24VA

Interfering emission : DIN EN 55011
Störfestigkeit : DIN EN 61000-4-2 to -6, DIN EN 50082-2

Stroke : with PC parameterizable via software 0 - 60mm
Running time : approx. 50 Sec. for 60mm stroke



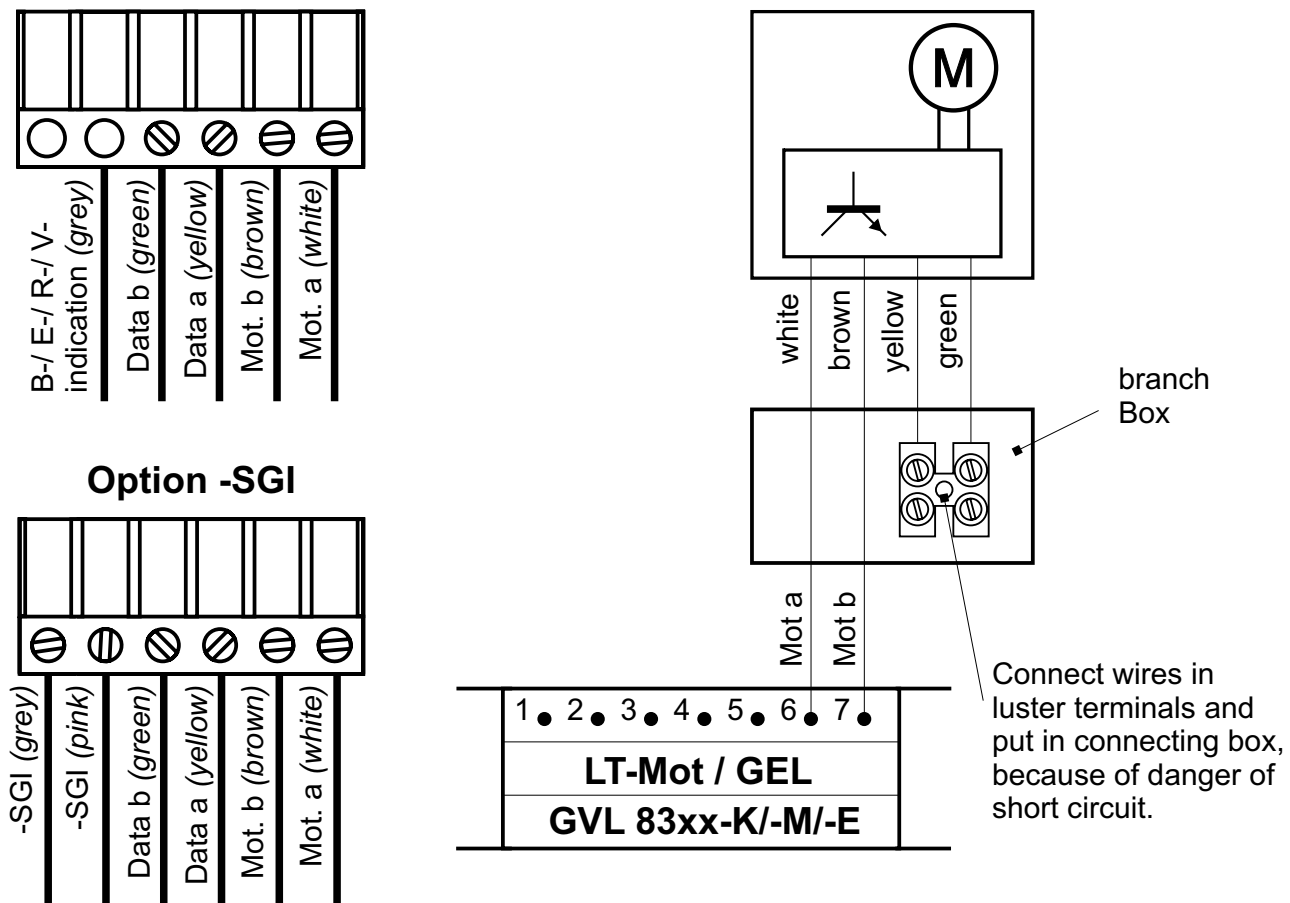
Housing : VA 25 x 25 with black plastic end caps
Temperature range : -5°C ... + 50°C
Connection : 2,5m Silicone cable grey
Force : up to 700N opening force,
locking pressure within easy reach area parameterizable via PC
Lifetime : > 10.000 double strokes
Protective system : IP 50

„**R-signal**“ electronically generated Open- and Closed signal in conjunction with D+H control panels and additional module. The signal remains available, also in case of power failure.

Optional

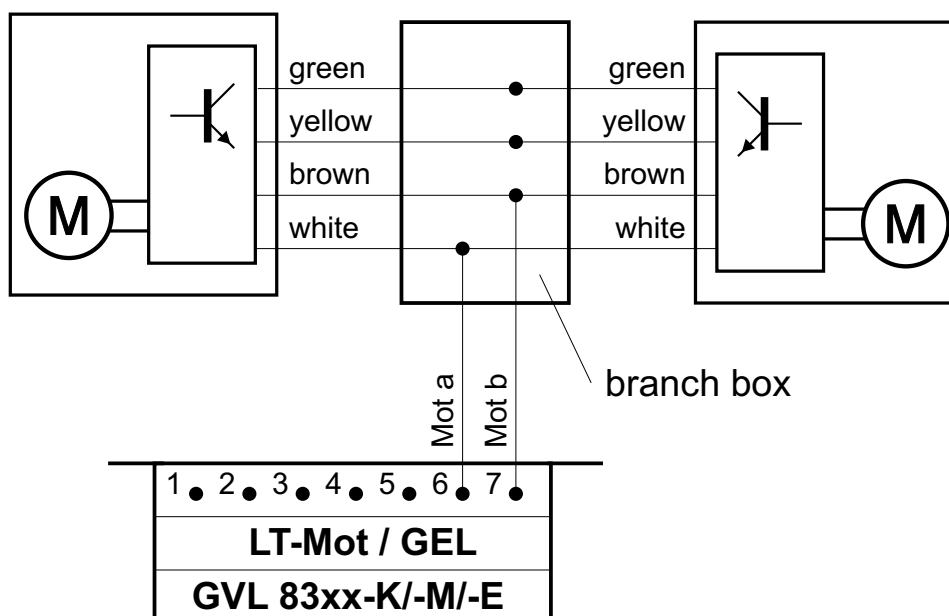
„**SIG-signal**“ in conjunction with D+H control panels for position accurate triggering via BMS e.g. for controlled ventilation.

Connection / 1 drive



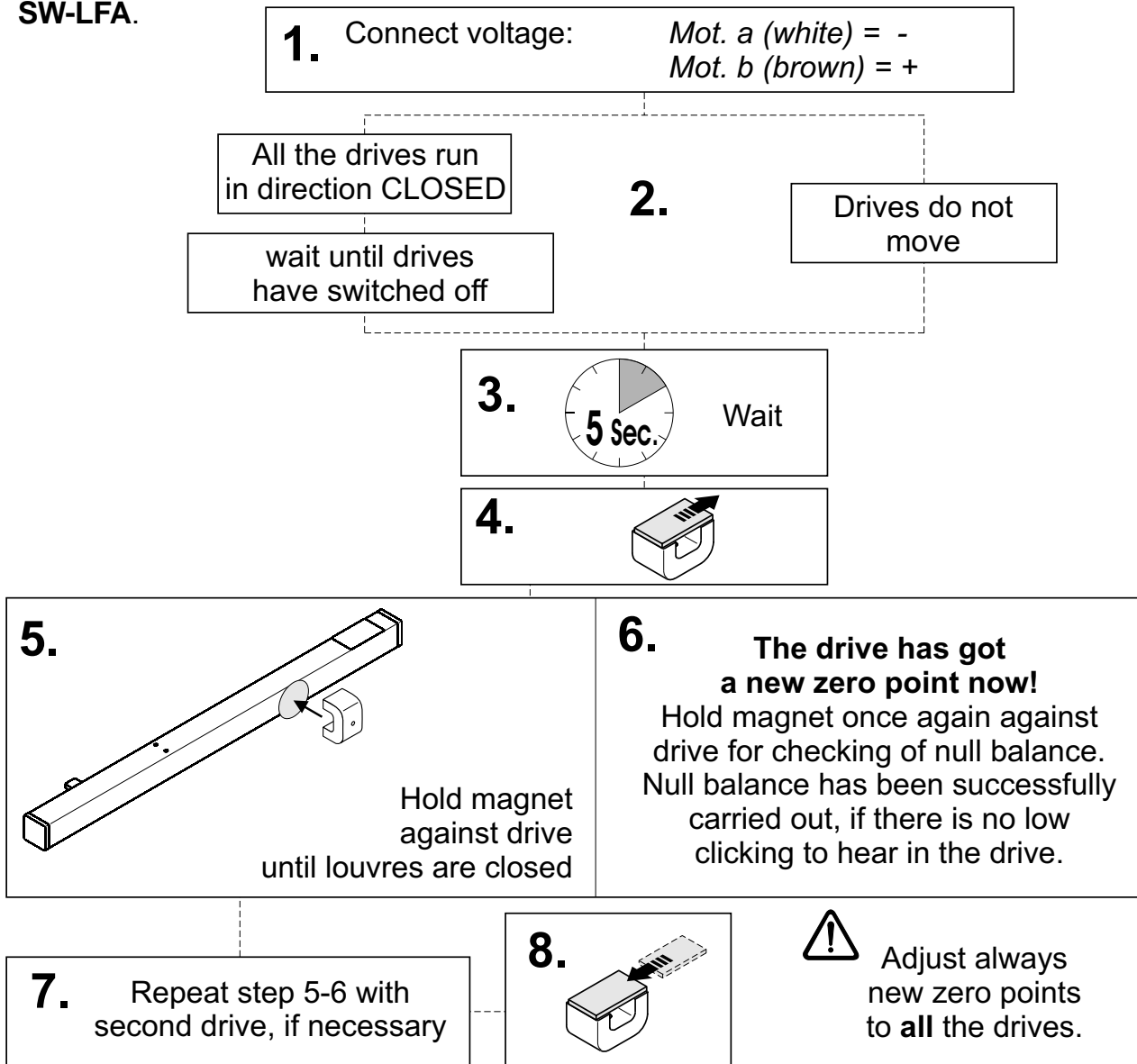
Connection / 2 drives

A **Tandem-Set** is to be chosen with help of programming-software SW-LFA, if 2 drives are connected to one louvre.



Nullabgleich mit Dauermagnet

alternatively
the drive can be
referenced also
with software
SW-LFA.



Guarantee

You will get **2 years** guarantee for all D+H products from date of verified handing over of the system up to maximal 3 years after date of delivery, when mounting and starting has been carried out by a D+H authorized **distributor**.

D+H guarantee is expired, with connection of D+H components with external systems or with mixing of D+H products with parts of other manufacturers.